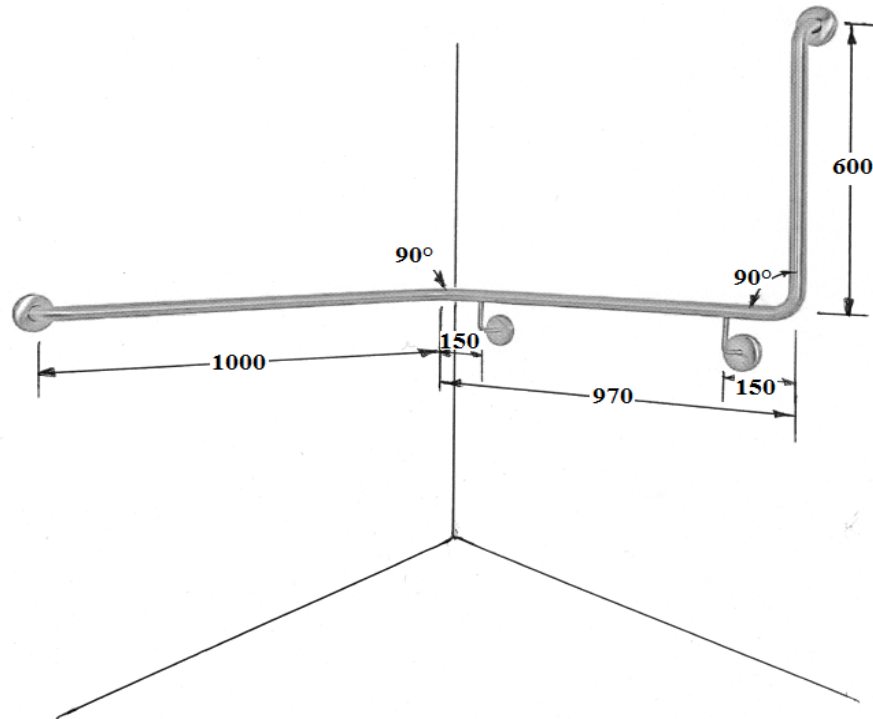


**TECHNICAL DATA
TWO WALL GRAB RAIL
STAINLESS STEEL**

**MODEL S32-020-2-90
S32-021-2-90**



S32-020-2-90 (As per photograph)
S32-021-2-90 Opposite hand

Material: 32mm Type 304 stainless steel with a satin finish

Construction:

The rail is fabricated from type 304 - 1.2mm stainless steel
Under slung support is fabricated from type 304 - 12mm stainless steel round bar
The flanges are fabricated from type 304 - 3.0mm stainless steel with 3 fixing holes
The covers are fabricated from type 304 - 0.7mm stainless steel
The flange is fully welded to the rail and the covers snap onto the flanges

Installation:

Secures to the wall with mounting screws using the holes provided



Phone: (02) 95344031

Fax: (02) 95841030

www.starwashroom.com.au

Email: info@starwashroom.com.au

ABN: 78 146 670 493 | ACN: 146 670 493

Unit 2 , 41-45 Lorraine St , Peakhurst NSW 2210
P O Box 2210 , Peakhurst NSW 2210